

An abstract artwork featuring a vibrant green background. Overlaid on this are numerous thin, dark, swirling lines that create a sense of movement and depth. Interspersed among these lines are various shapes in shades of red, orange, and yellow, some of which are outlined in black, giving the impression of organic forms or perhaps stylized figures. The overall effect is one of dynamic energy and complex visual texture.

Jillyns.art

Studio Catalog 2021

My Art, My Passion



All my life I've had an intrinsic desire for creativity. I've always been moved by nature's infinite sea of movement, color, and design. This enduring passion has led me to fantastic experiences with wonderful people and other amazing artists and pulled me through the daunting experience of cancer.

At a very young age, my imagination began to bloom through the influence of my artistic mother. I envied her delicate touch to drawings and how she could simplify the most intricate details.

Later in life, my imagination was further ignited upon an introduction to world famous Neoclassical artist, Tomasz Rut. The hours spent modeling for him and watching him paint was an incredible, life changing, experience. I am blessed to have had the amazing opportunity to be a part of his creative process.

My gratitude goes out to everyone who has supported me in my life's journey- especially to my father, my real life hero. I remember at the age of four, slipping into the bottom of a swimming pool. My father dove in and saved me from drowning.

It took the care and support of many others to help me arrive to where I am today. Through my husband it became possible for me to pursue my passions. Giving back and helping others is another motivation for creating my art. A portion of all sales are donated to charities and other causes. I hope you'll enjoy this collection of designs from my life story and consider incorporating them into your life as well.

A handwritten signature in black ink, reading "Jillyn". The signature is fluid and cursive, with a large, stylized 'J' and a long, sweeping tail.

Public Sales and Client Services

Interior Design
Design Professionals
Hotel & Restaurant
Image Licenses

phone: (303) 551-5596
email: jillynsart@yahoo.com
web: jillyns.art
hours: M-F 10:30 AM - 4:30 PM

All Giclée art is reproduced from my acrylic on canvas originals to the highest standards, here in the U.S.A.

My goal is to ensure that you are satisfied, without exception, with any Art Print purchased from this catalog. Art Prints are produced on demand with a 3 week production window in the media and size of your choice:

Gallery Wrap Canvas Prints (1.5" depth)

Exuding both elegance and sophistication, Canvas Prints are printed using archival inks on the highest quality matte-canvas substrate, then coated to protect the print from harmful elements and UV damage.

Metal with Floating Hanger

Metal prints on brushed aluminum, finished with a glossy coat that offers the sharpest art reproduction.

Fine Art Paper

Printed on Hahnemuhle Photo Rag paper with archival inks. These prints are produced on a 100% rag based paper that is resin-coated to offer a level of water resistance and durability.

Pricing

See enclosed price list, or contact me directly for the most current Public Sales or Client Services price lists.

Ordering

Please contact me directly to begin the ordering process and verify your pricing options.

Payment Options

I accept payment via Cash, Check, Venmo, or Square.

Returns and Replacements

See page 41 for details.-



1 - Agave Cupreata

Prints : 11.6"x16", 16"x22", 24"x33", 32"x44", 40"x55"



12 - *Colorful Agave*

Prints : 12"x15", 18"x22", 24"x30", 32"x40", 40"x50"



7 - *Blue Agave*
Prints : 16"x24", 20"x30", 24"x36", 32"x48", 40"x60"



25 - *Morning Dew*

Prints : 9"x20", 13.5"x30", 18"x40", 22.5"x50", 27"x60"





30 - Plant Explosion

Prints : 12"x20", 18"x30", 24"x40", 30"x50", 36"x60"



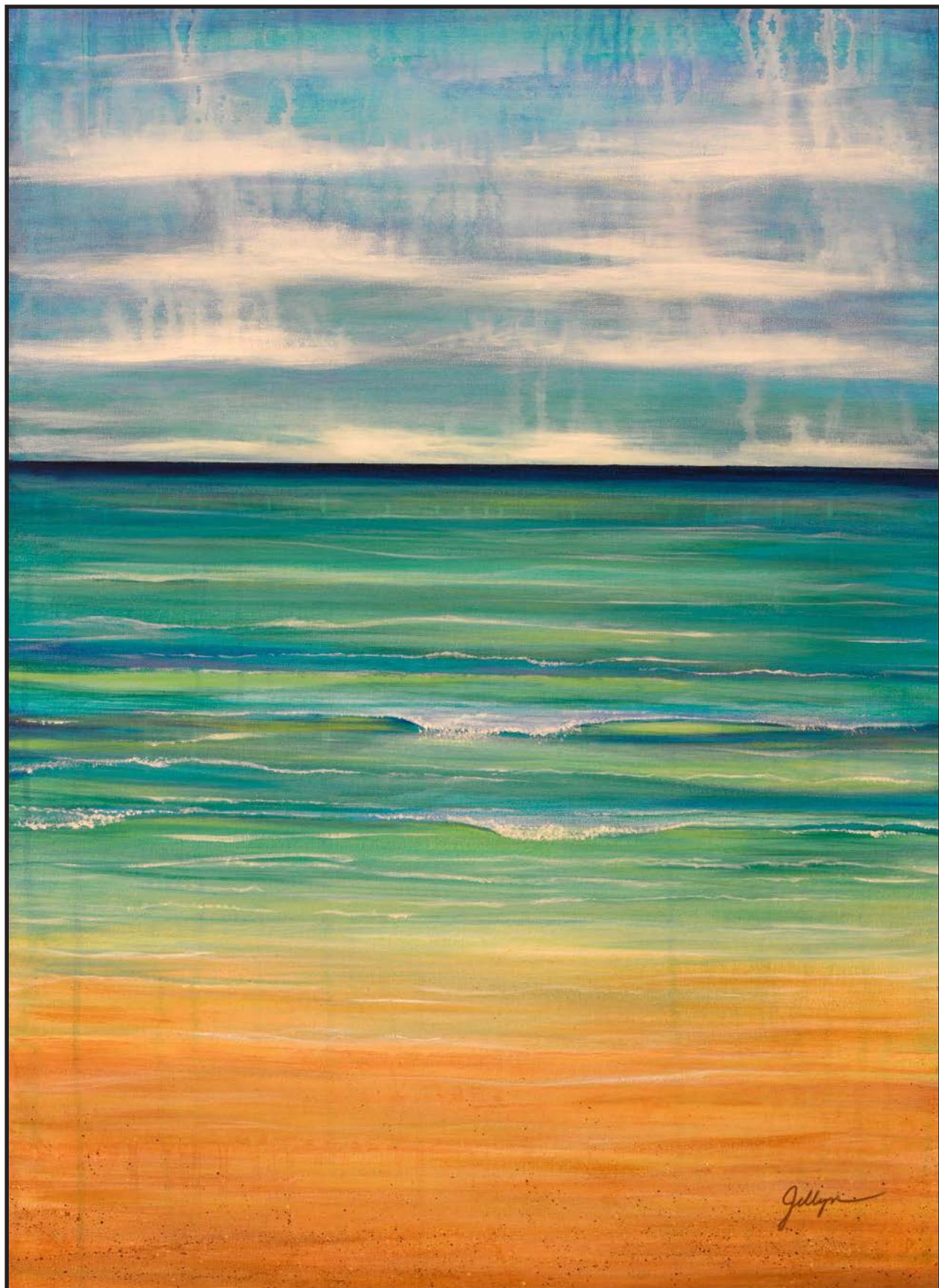
18 - Fila De Cactus

Prints : 13"x21", 20"x32", 26"x42", 30"x48", 37.5"x60"



26 - *Mountain Agave*

Prints : 14"x22", 20"x30", 24"x36", 32"x48", 40"x60"



5 - *Beach Abstract*

Prints : 11"x15", 17.5"x24", 22"x30", 33"x45", 44"x60"



23 - *Macaws*

Prints : 12"x15", 16"x20", 24"x30", 32"x40", 40"x50"



49 - Tropical Fish

Prints : 12"x16", 18"x24", 24"x32", 30"x40", 36"x48"



20 - Koi Abstract

Prints : 10"x20", 15"x30", 18"x36", 24"x48", 30"x60"



48 - Tres Fish

Prints : 10"x20", 15"x30", 18"x36", 24"x48", 30"x60"



14 - *Evening Koi*

Prints : 16"x24", 20"x30", 24"x36", 32"x48", 40"x60"



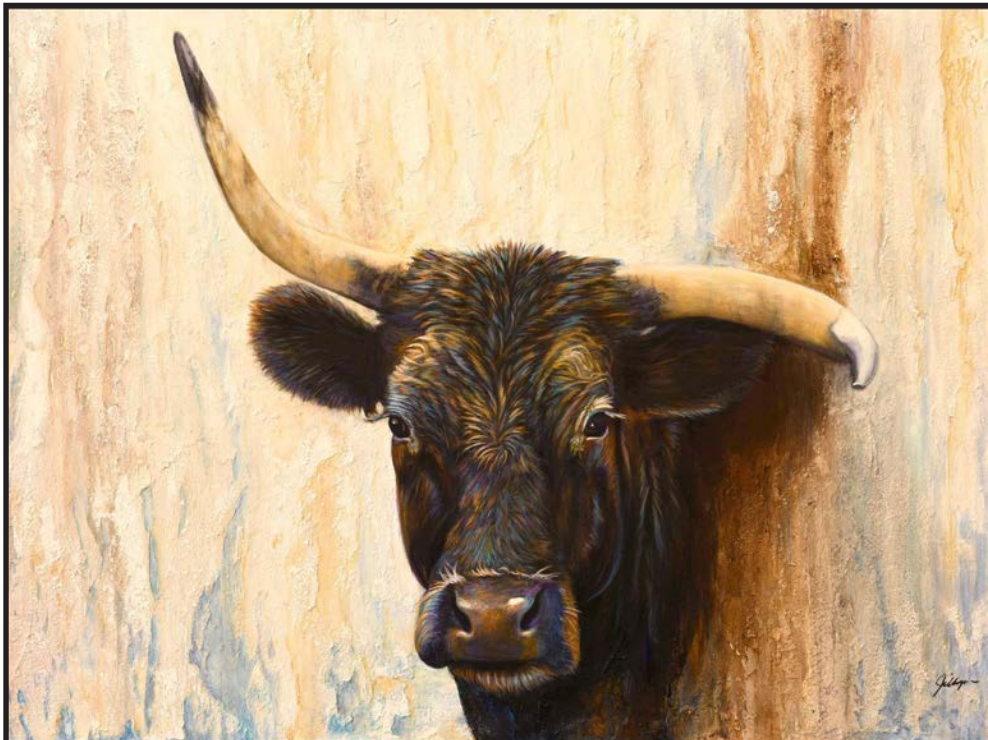
27 - *Novilla*

Prints : 20"x20", 24"x24", 38"x38", 48"x48", 54"x54"



6 - Black Bull

Prints : 10"x11", 20"x22",
30"x33", 40"x44", 50"x55"



42 - Ruby

Prints : 12"x16", 18"x24",
24"x32", 30"x40", 36"x48"



17 - Fiesta Time

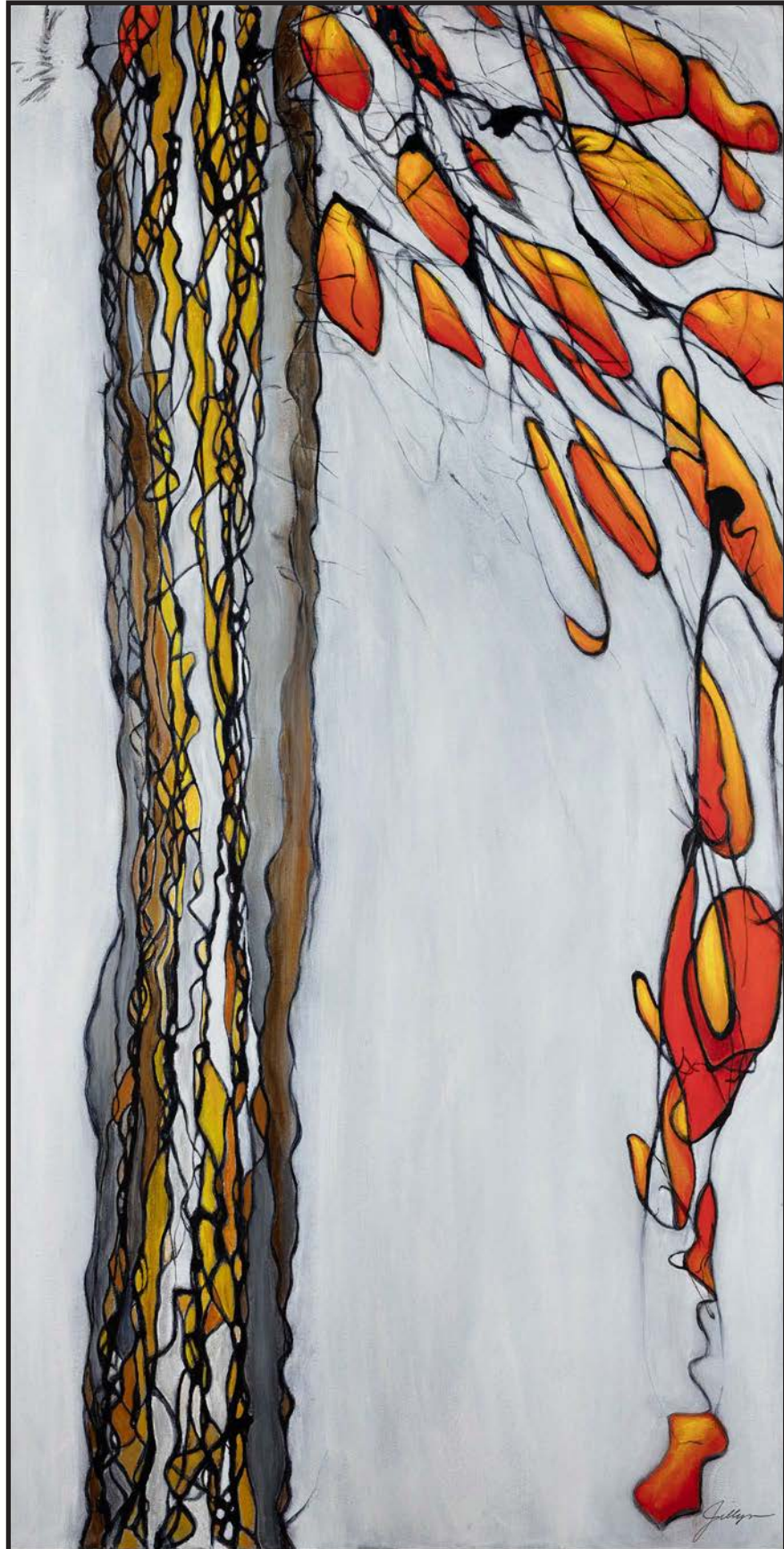
Prints : 12"x15", 18"x22", 24"x30", 32"x48", 40"x50"





32 - Promenade

Prints : 16"x24", 20"x30", 24"x36", 32"x48", 40"x60"



15 - *Falling Leaves*

Prints : 10"x20", 15"x30", 18"x36", 24"x48", 30"x60"



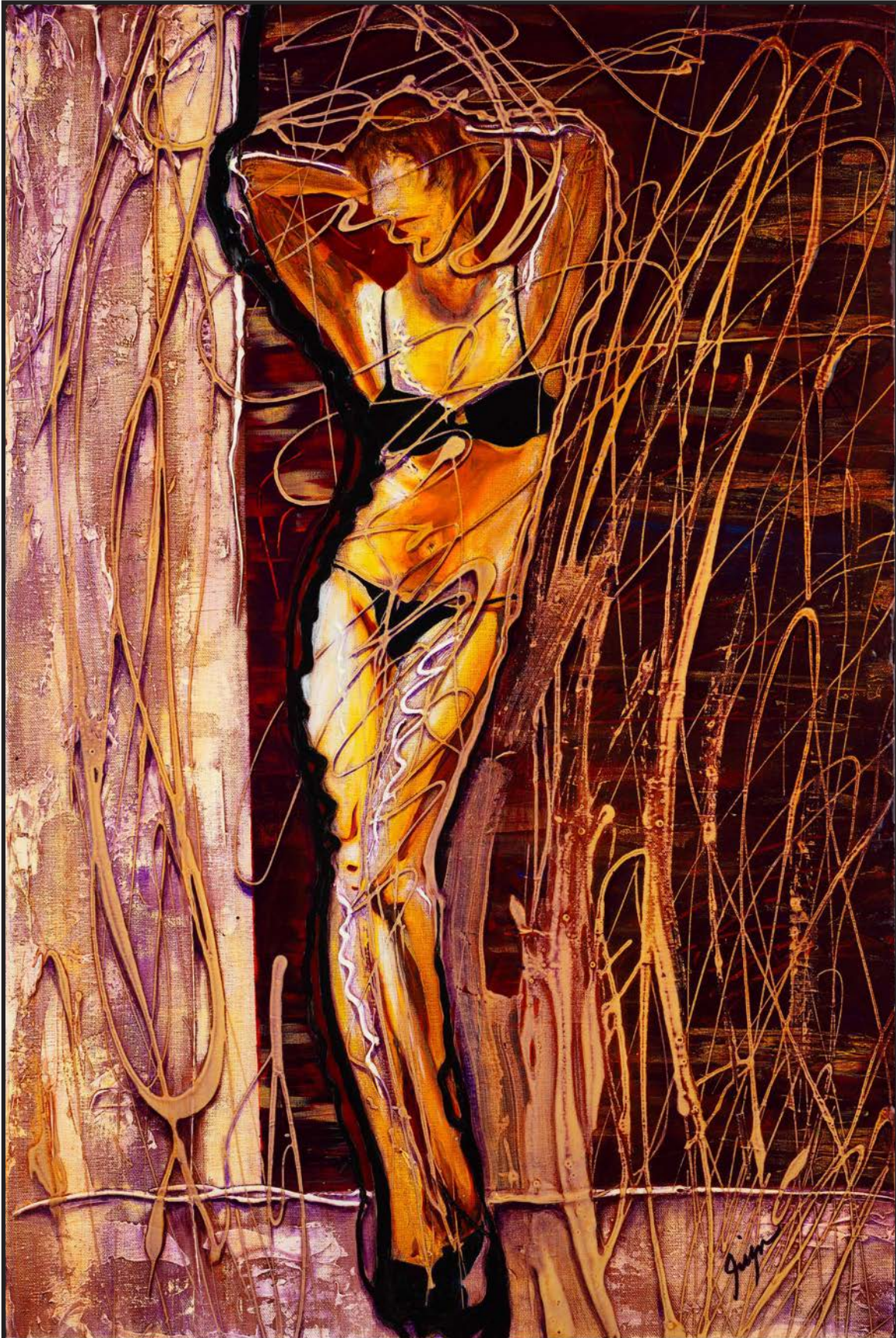
2 - *April's Shower*

Prints : 20"x20", 24"x24", 30"x30", 44"x44", 54"x54"



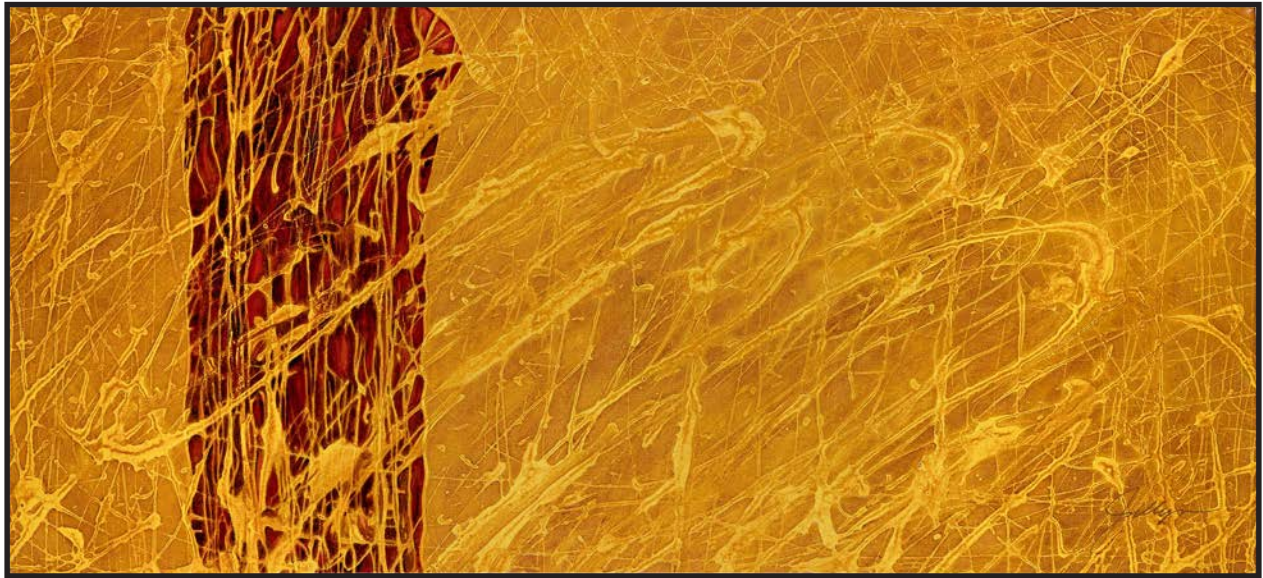
13 - *Dancing Muses*

Prints : 12"x15", 16"x20", 24"x30", 32"x48", 40"x50"



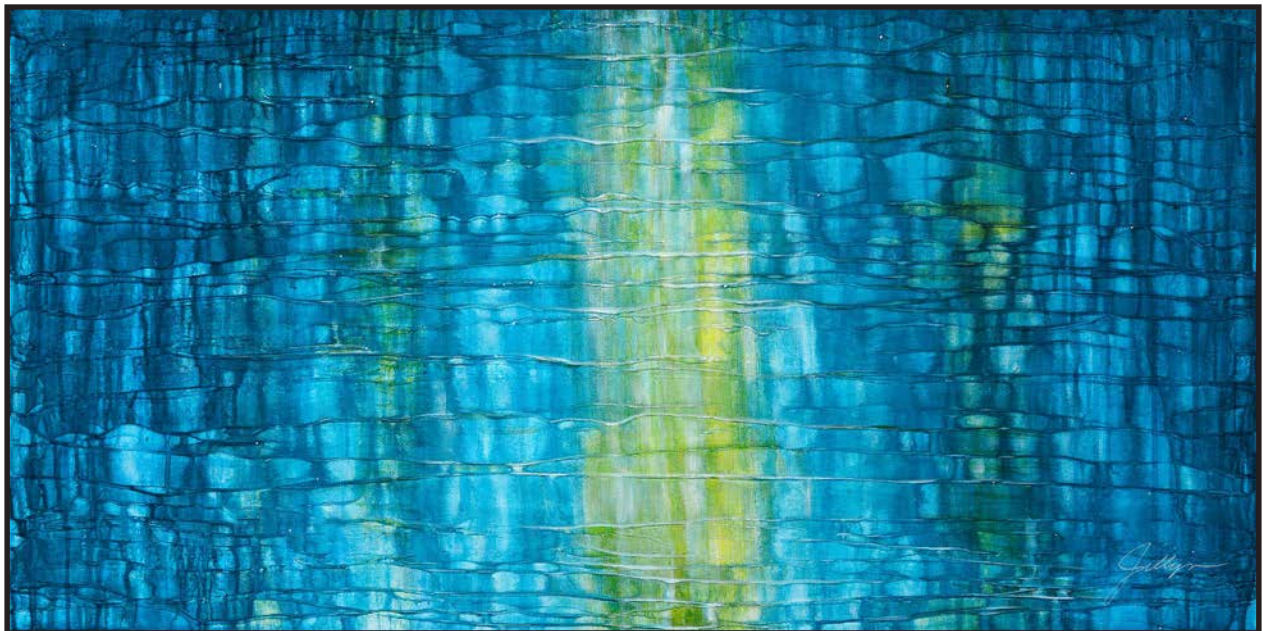
47 - *Summer Fun*

Prints : 16"x24", 20"x30", 24"x36", 32"x48", 40"x60"



3 - Autumn

Prints : 10"x22", 15"x33", 20"x44", 25"x55", 30"x66"

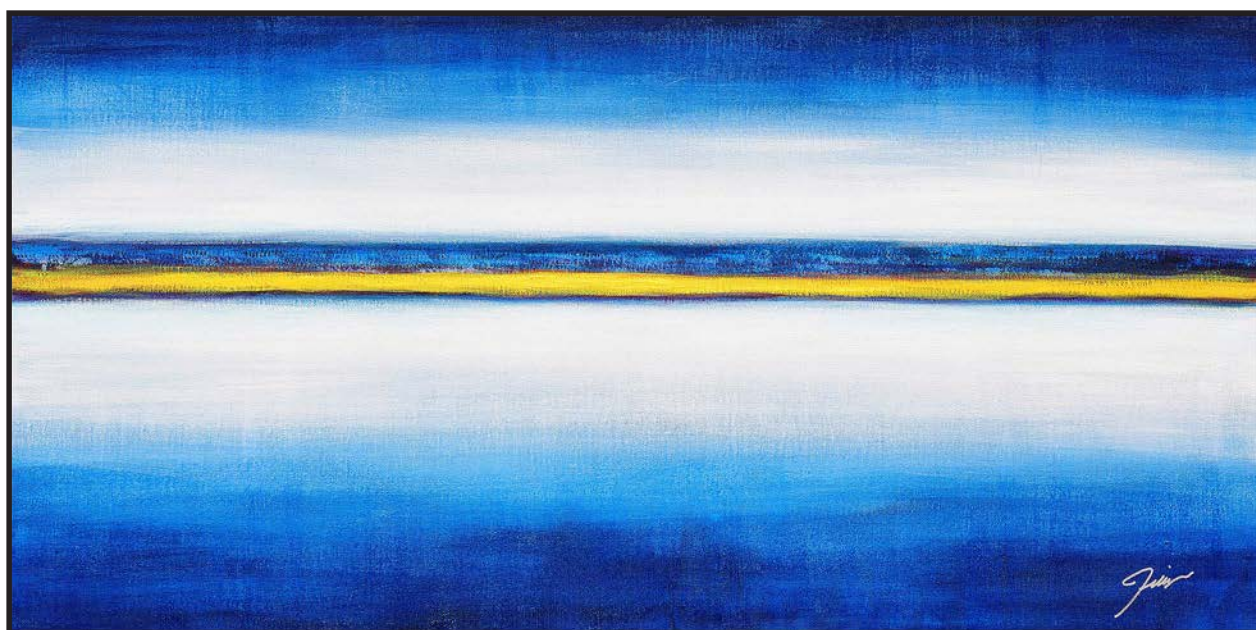


10 - Blue Dream

Prints : 10"x20", 15"x30", 20"x40", 24"x48", 30"x60"



8 - Blue Cabo (red line)
 Prints : 10"x20", 15"x30", 18"x36", 24"x48", 30"x60"

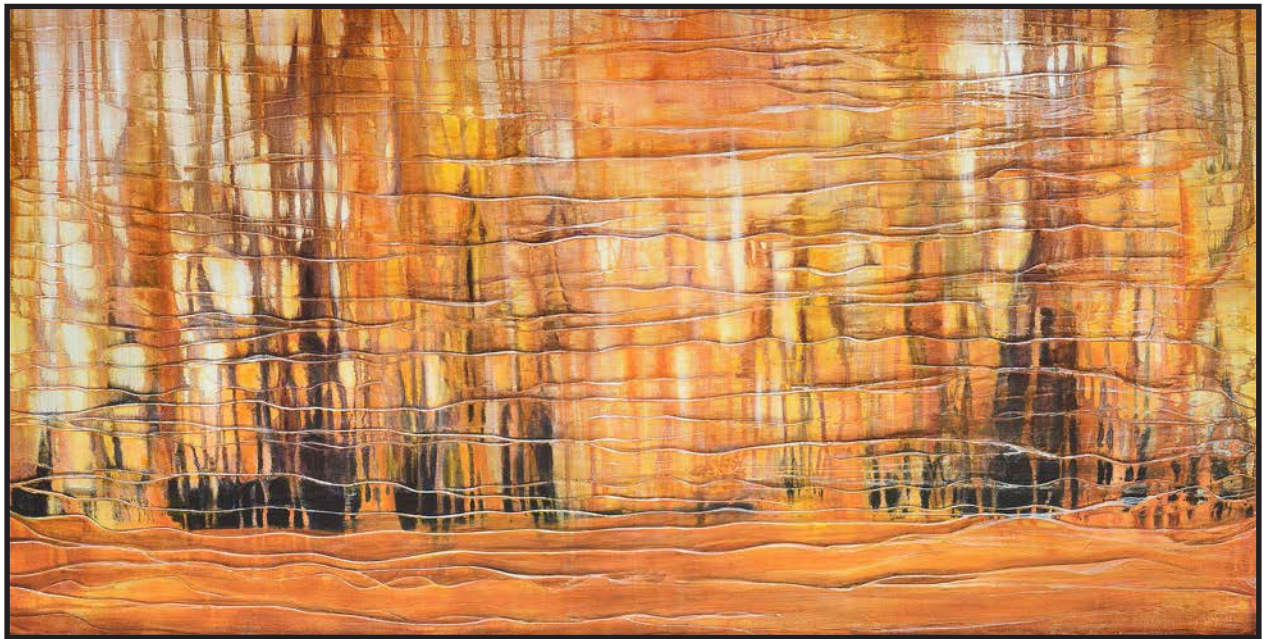


9 - Blue Cabo (yellow line)
 Prints : 10"x20", 15"x30", 18"x36", 24"x48", 30"x60"



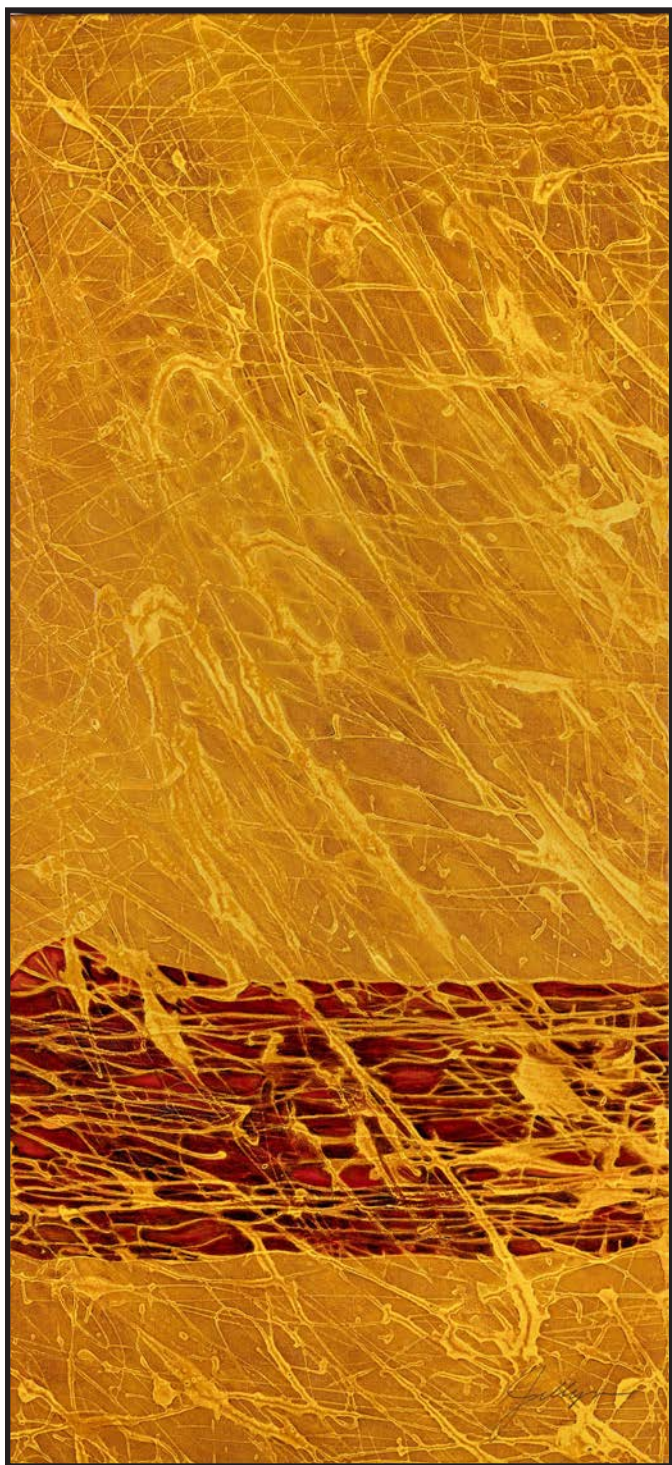
38 - Red Trees

Prints : 10"x20", 15"x30", 18"x36", 24"x48", 30"x60"



43 - Rustic Forest

Prints : 10"x20", 15"x30", 18"x36", 24"x48", 30"x60"



4 - Autumn (Vertical)

Prints : 10"x22", 15"x33", 20"x44", 25"x55", 30"x66"



11 - Blue Dream (Vertical)

Prints : 10"x20", 15"x30", 20"x40", 24"x48", 30"x60"

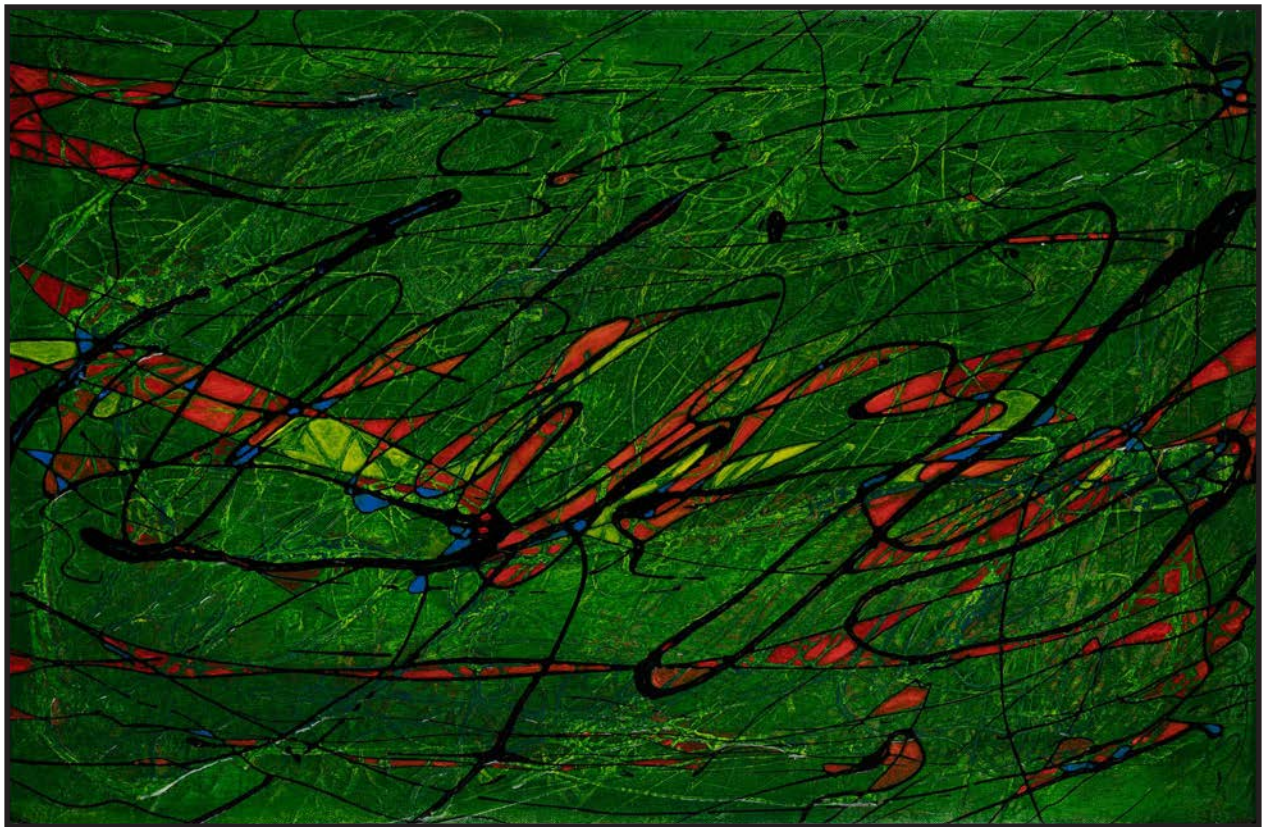


16 - *Fiesta Abstract*

Prints : 16"x16", 20"x20", 24"x24", 36"x36", 48"x48"



53 - Whispering Wind (Horizontal)
 Prints : 10"x18", 15"x27", 20"x36", 25"x45", 30"x54"



19 - Green Abstract
 Prints : 16"x24", 20"x30", 24"x36", 32"x48", 40"x60"



41 - Reflection

Prints : 10"x20", 15"x30", 18"x36", 22"x44", 30"x60"



21 - Liquid Green (Horizontal)

Prints : 3"x21", 4"x28", 5"x35", 6"x42", 7"x49"

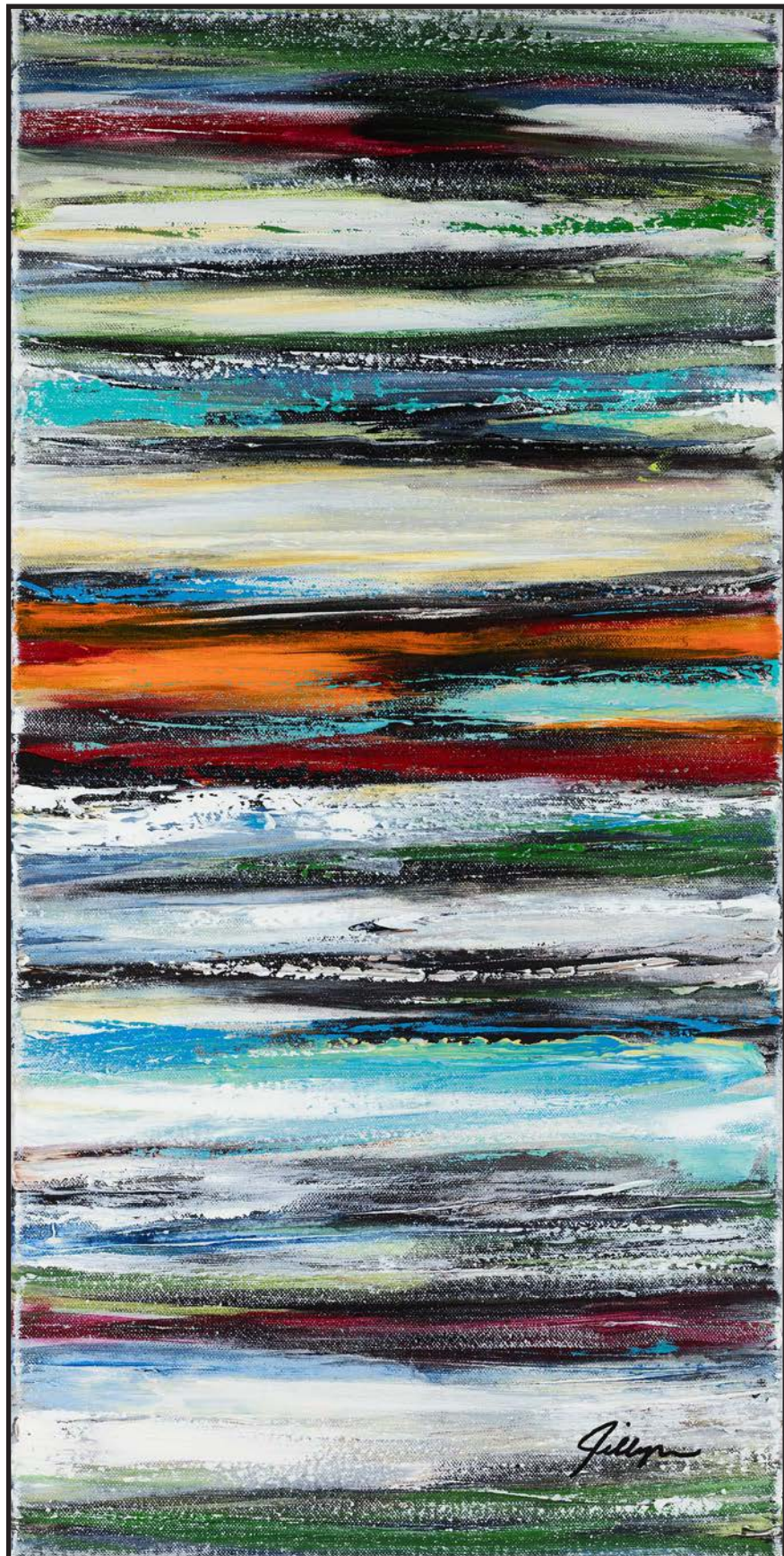


39 - Reflecting Sun

Prints : 10"x20", 12"x24", 18"x36", 24"x48", 30"x60"



22 - *Liquid Green (Vertical)*
 Prints : 3"x21", 4"x28", 5"x35", 6"x42", 7"x49"



24 - *Mexican Blanket*
 Prints : 10"x20", 12"x24", 18"x36", 24"x48", 30"x60"



29 - *Pheona*

Prints : 11"x14", 16.5"x21", 22"x28", 33"x42", 44"x56"



31 - Primary Color Abstract

Prints : 10"x20", 12"x24", 18"x36", 24"x48", 30"x60"



36 - Red Sea (Horizontal)

Prints : 16"x24", 20"x30", 24"x36", 32"x48", 40"x60"



28 - Ornamental Wheel

Prints : 10"x20", 12"x24", 18"x36", 24"x48", 30"x60"

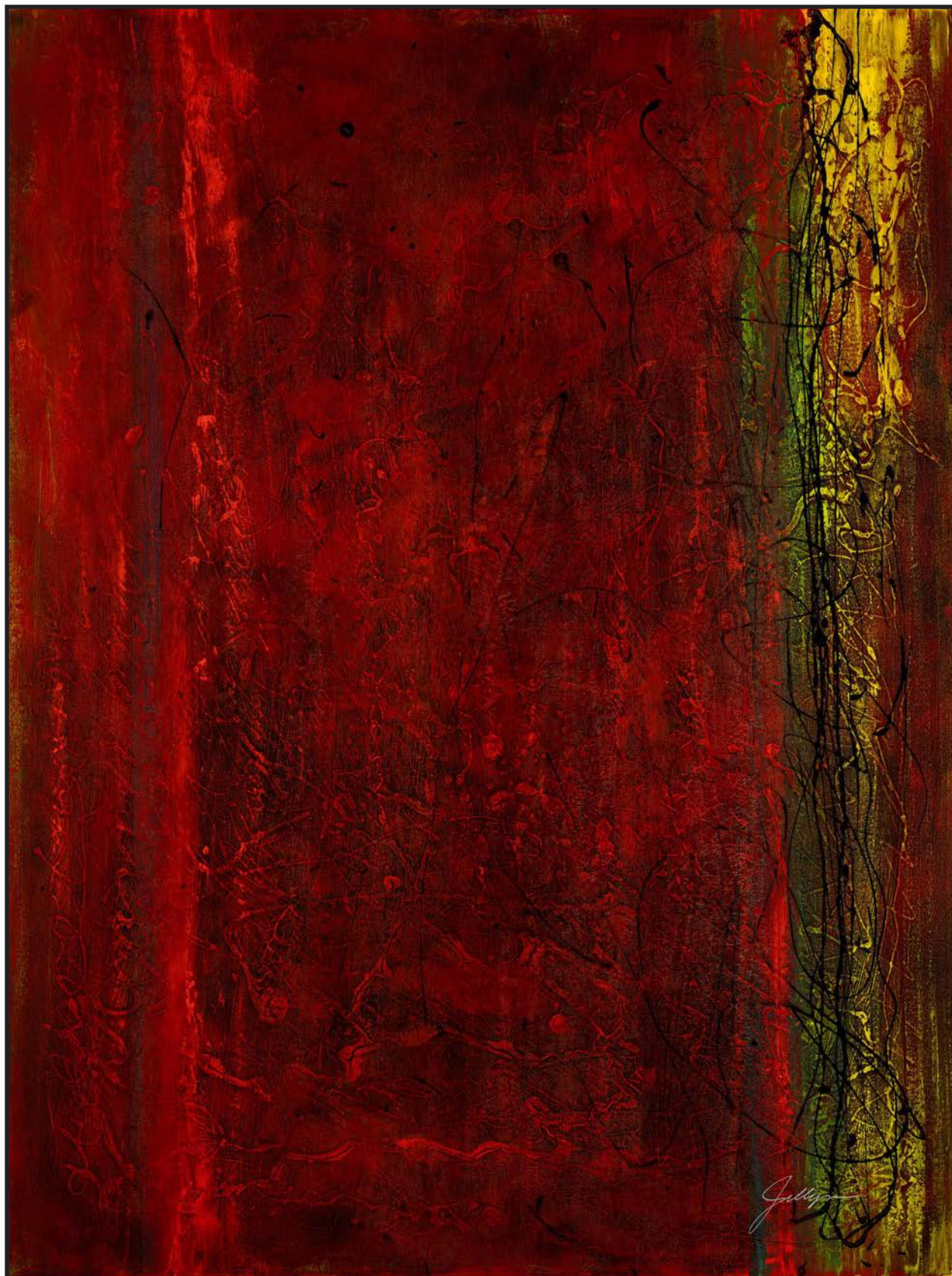


51 - Wheatfields

Prints : 12"x24", 18"x36", 24"x48", 30"x60", 36"x72"



33 - *Rainy Day*
Prints : 12"x15", 16"x20", 24"x30", 32"x48", 40"x50"



34 - *Red Abstract*

Prints : 12"x16", 18"x24", 24"x32", 30"x40", 36"x48"



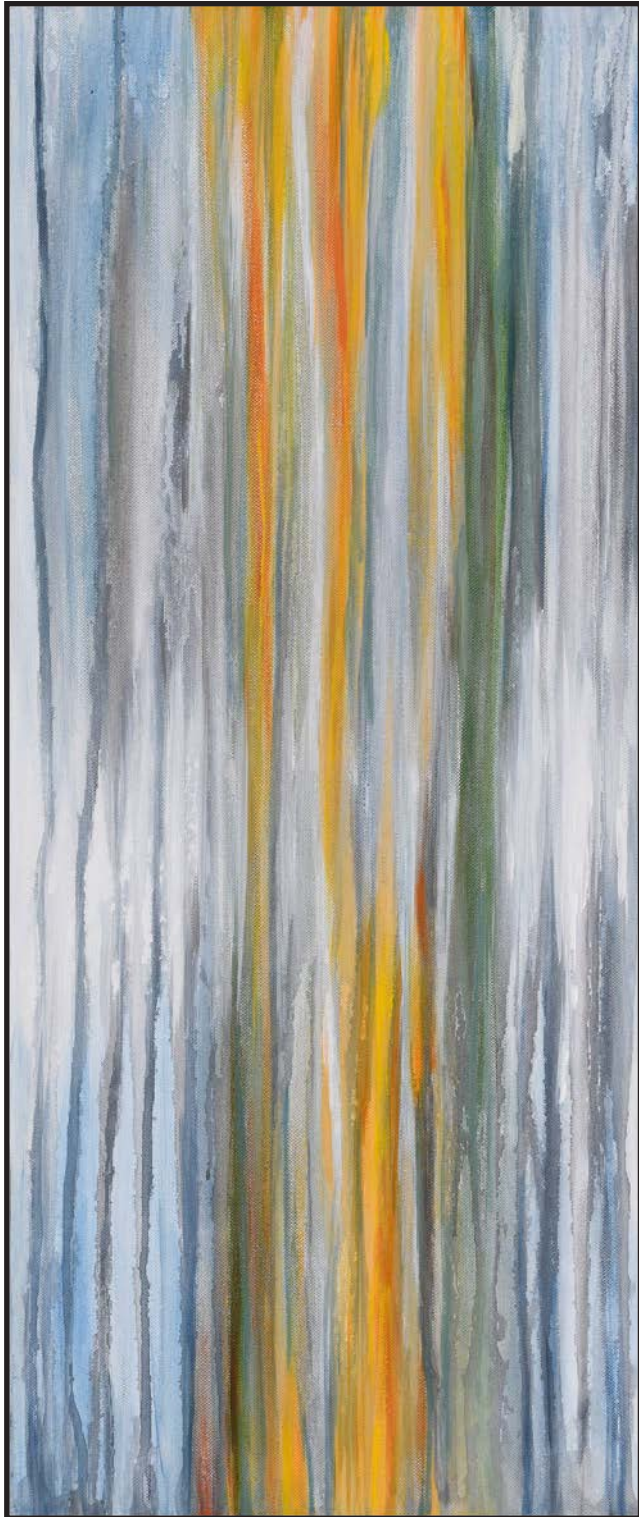
35 - *Red Line*

Prints : 12"x12", 18"x18", 24"x24", 36"x36", 48"x48"



37 - *Red Sea (Vertical)*

Prints : 16"x24", 20"x30", 24"x36", 32"x48", 40"x60"



40 - Reflecting Sun (Vertical)
 Prints : 10"x20", 12"x24", 18"x36", 24"x48", 30"x60"



50 - Volatile
 Prints : 10"x20", 15"x30", 18"x36", 24"x48", 30"x60"



52 - *Whispering Wind*

Prints : 10"x18", 15"x27", 20"x36", 25"x45", 30"x54"



44 - *Sacred Forest*

Prints : 14"x20", 18"x26", 27"x39", 36"x52", 45"x65"



45 - Sacred Forest II
 Prints : 4"x20", 6"x30", 8"x40", 10"x50", 12"x60"



46 - Sacred Forest III
 Prints : 4"x20", 6"x30", 8"x40", 10"x50", 12"x60"



34 - Red Abstract

Prints : 12"x16", 18"x24", 24"x32", 30"x40", 36"x48"



14 - Evening Koi

Prints : 16"x24", 20"x30", 24"x36", 32"x48", 40"x60"



19 - Green Abstract

Prints : 16"x24", 20"x30", 24"x36", 32"x48", 40"x60"



27 - Novilla

Prints : 20"x20", 24"x24", 38"x38", 48"x48", 54"x54"

INDEX BY TITLE

<i>Title</i>	<i>Item #</i>	<i>Page #</i>
Agave Cupreata	1	1
April's Shower	2	17
Autumn	3	20
Autumn (Vertical)	4	23
Beach Abstract	5	7
Black Bull	6	13
Blue Agave	7	3
Blue Cabo (Red Line)	8	21
Blue Cabo (Yellow Line)	9	21
Blue Dream	10	20
Blue Dream (Vertical)	11	23
Colorful Agave	12	2
Dancing Muses	13	18
Evening Koi	14	11, 39
Falling Leaves	15	16
Fiesta Abstract	16	24
Fiesta Time	17	14
Fila De Cactus	18	5
Green Abstract	19	25, 40
Koi Abstract	20	10
Liquid Green (Horizontal)	21	26
Liquid Green (Vertical)	22	27
Macaws	23	8
Mexican Blanket	24	27
Morning Dew	25	4
Mountain Agave	26	6
Novilla	27	12, 40
Ornamental Wheel	28	30
Pheona	29	28
Plant Explosion	30	5
Primary Color Abstract	31	29
Promenade	32	14, 15
Rainy Day	33	31
Red Abstract	34	32, 39
Red Line	35	33
Red Sea (Horizontal)	36	29
Red Sea (Vertical)	37	34
Red Trees	38	22
Reflecting Sun	39	26
Reflecting Sun (Vertical)	40	35
Reflection	41	26
Ruby	42	13
Rustic Forest	43	22
Sacred Forest	44	37
Sacred Forest II	45	38
Sacreds Forest III	46	38
Summer Fun	47	19
Tres Fish	48	10
Tropical Fish	49	9
Volatile	50	35
Wheatfields	51	30
Whispering Wind	52	36
Whispering Wind (Horizontal)	53	25

Returns and Replacements

Great care is taken in the manufacturing process. In the unlikely event of a manufacturing defect, we will accept a return within 30 days of receipt and either replace the print or refund the purchase price. Please contact us before sending back any art prints so we may assess issues via photographs first.

Please contact us regarding shipping damage issues.

Buyer pays for return shipping, contact us prior for instructions.

If the art print is being returned for any reason except manufacturing issues, it must be returned no more than 30 days after receipt. The price will be refunded less a 10% re-stocking fee. If the item is not returned in its original condition, the buyer is responsible for any loss in value.



Jillyn Archuleta
303-551-5596
www.jillyns.art

© 2017-2020 Jillyn Archuleta, All Rights Reserved